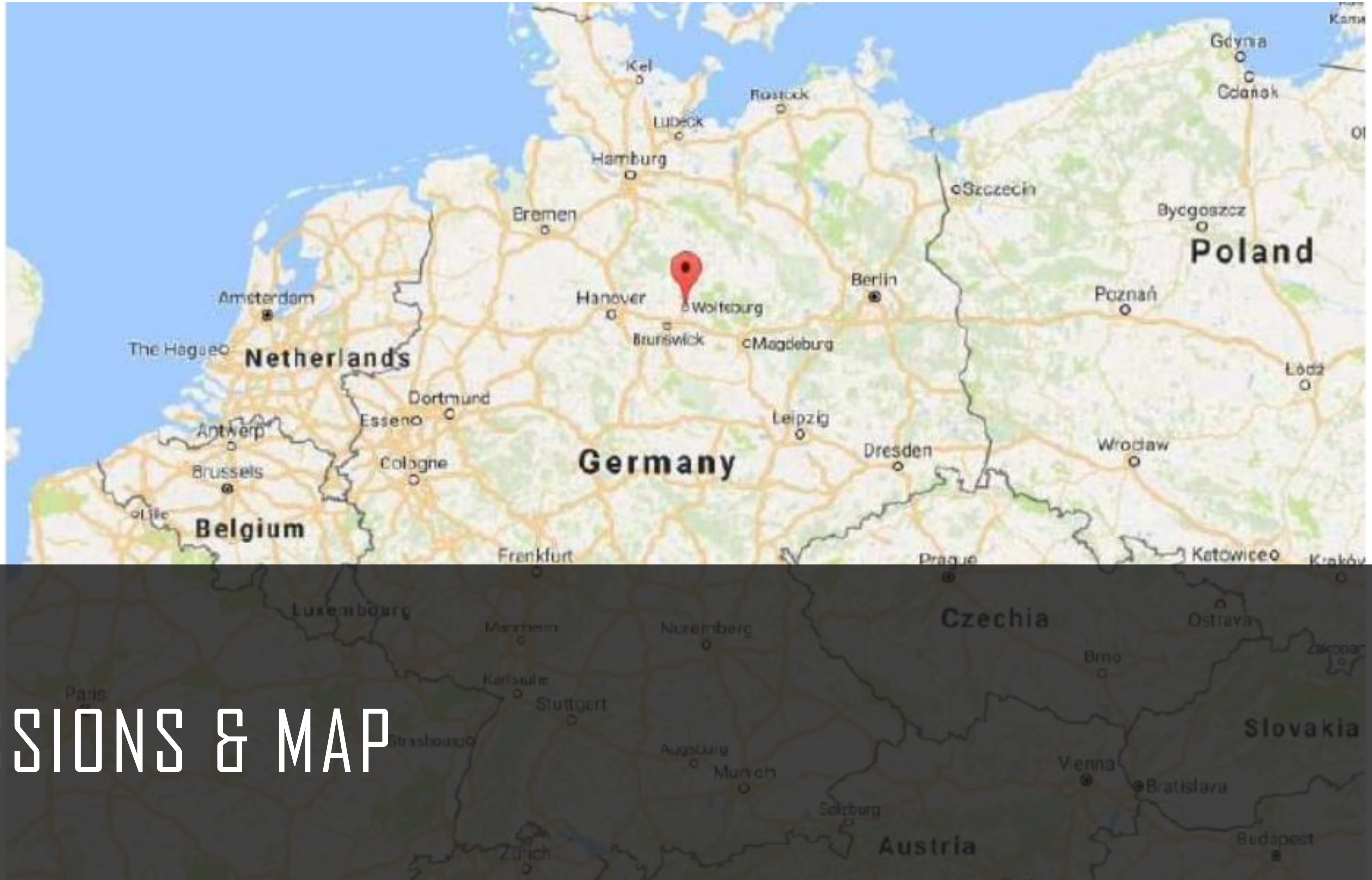




FY 20

WOLFSBURG NFS

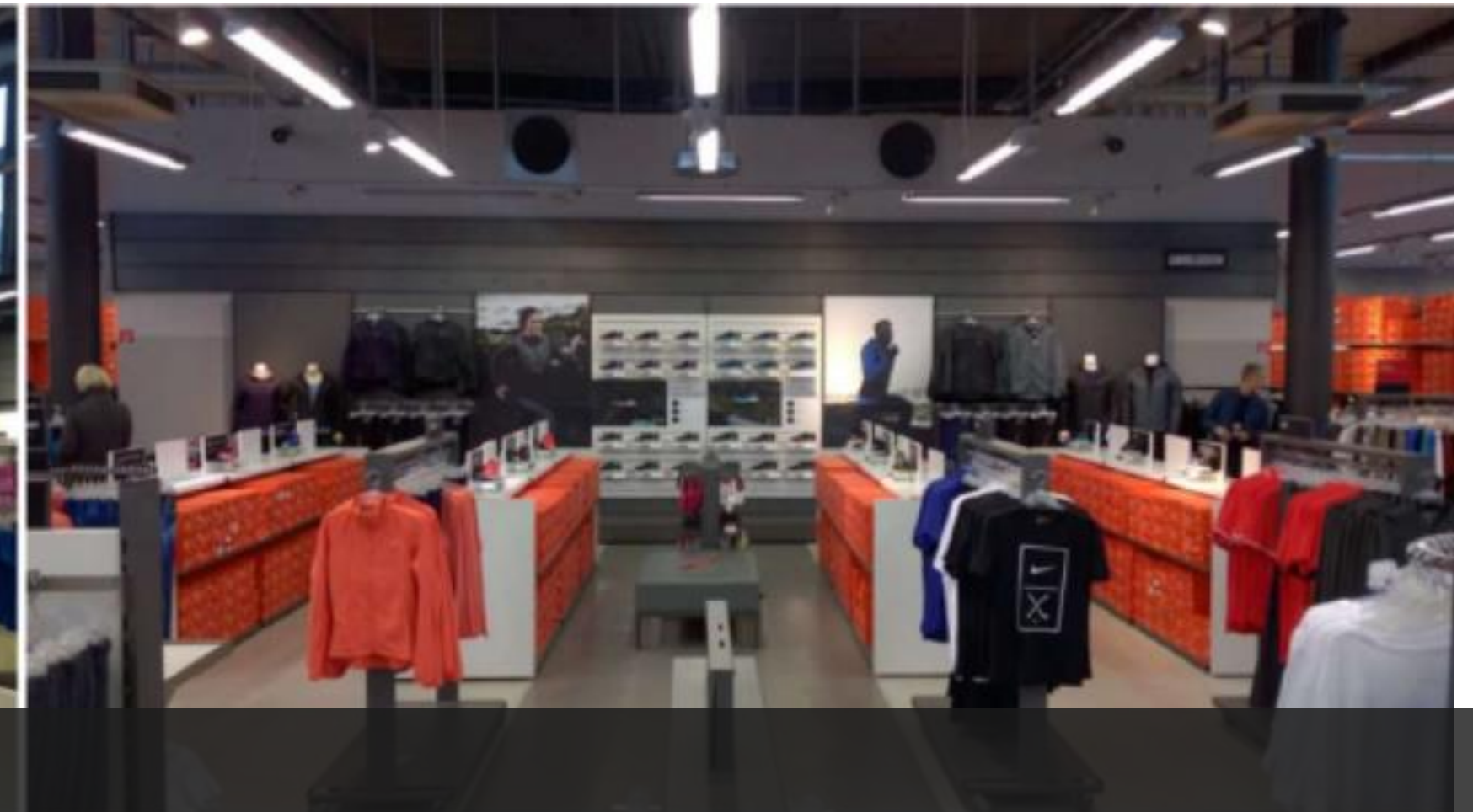
UPSIZE + FULL REFIT



IMPRESSIONS & MAP



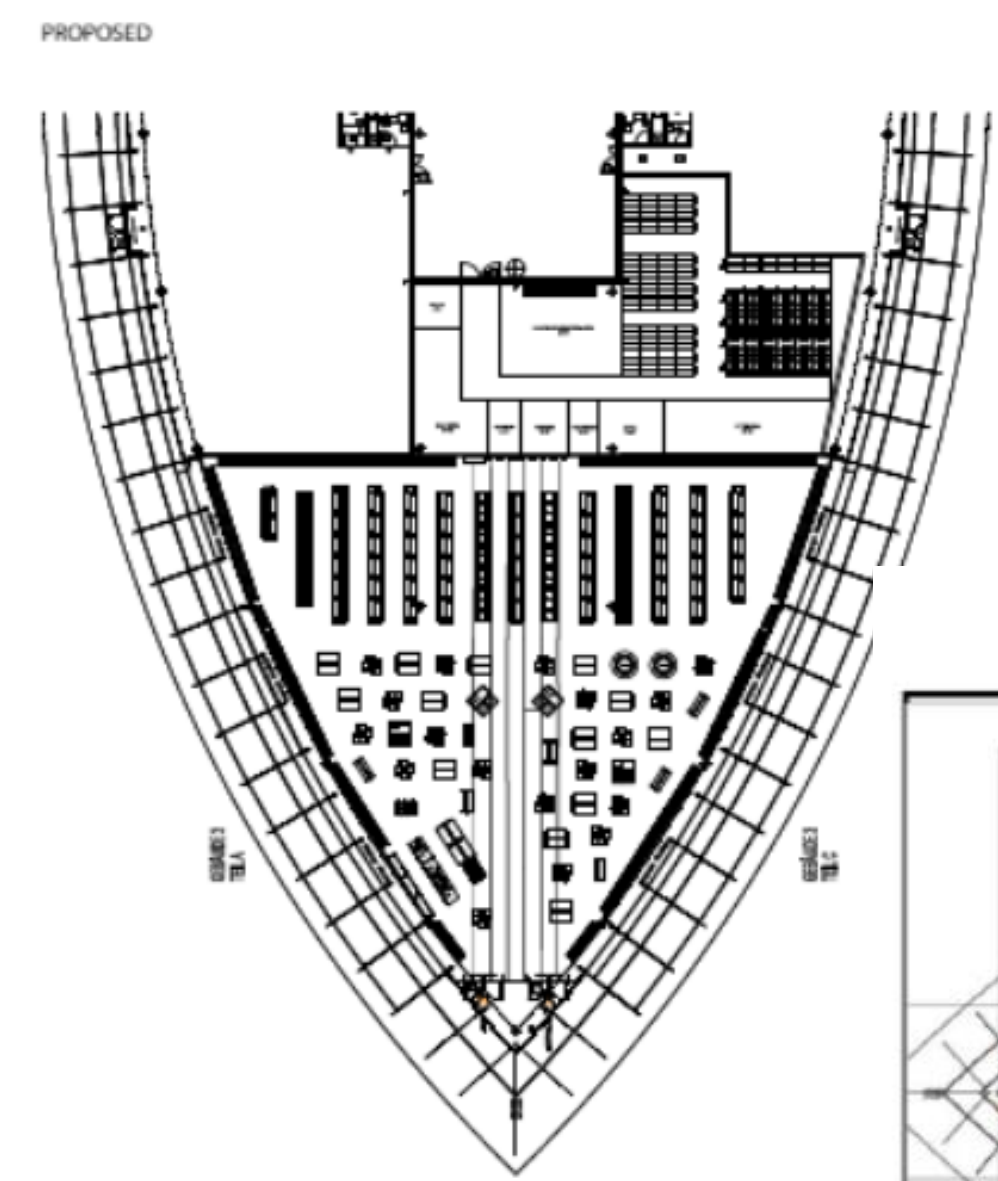
PREVIOUS SITUATION



PREVIOUS SITUATION



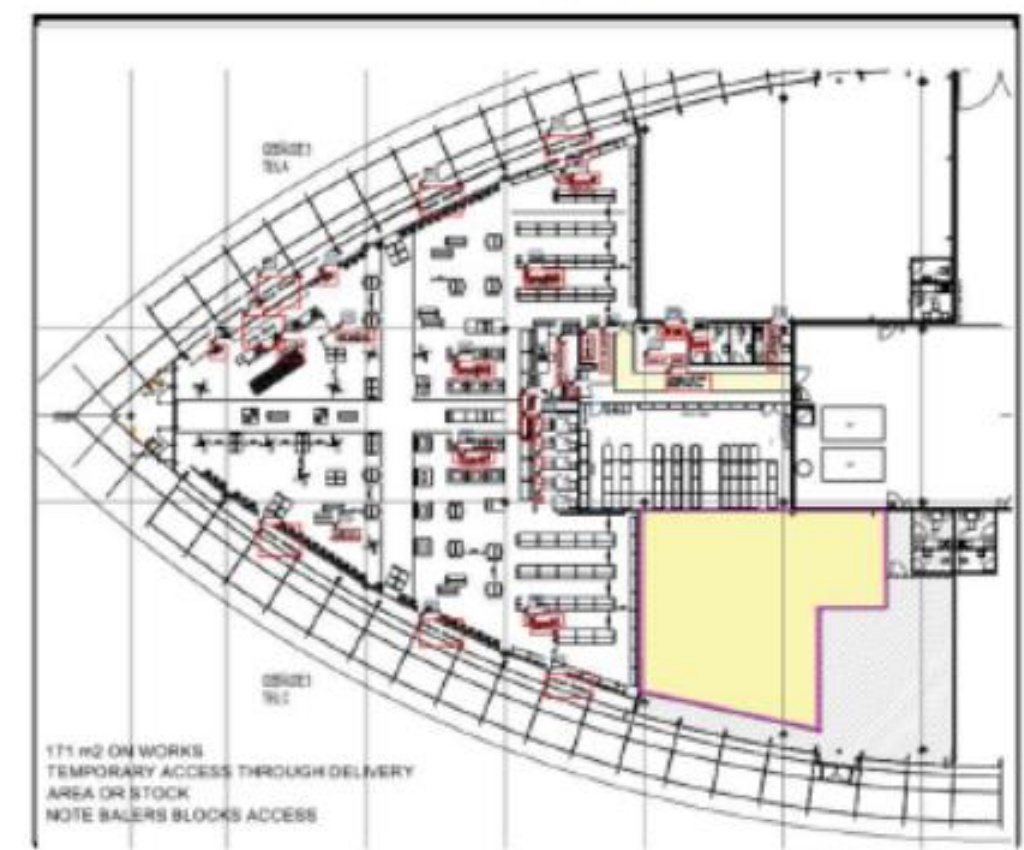
Wolfsburg, Germany



Total increase	184 m ²	23%	(current 804 m ² vs. new 988 m ²)
Sales floor increase	104 m ²	17%	(current 623 m ² vs. new 727 m ²)
Back of House increase	80 m ²	44%	(current 181 m ² vs. new 261 m ²)
Apparel increase SKUS	77 SKUS	24%	(current 326 SKUS vs. new 403 SKUS)
Footwear increase SKUS	94 SKUS	56%	(current 168 SKUS vs. new 264 SKUS)
FTW Bins Increase	24 Bins	57%	(current 42 bins vs. new 66 bins)

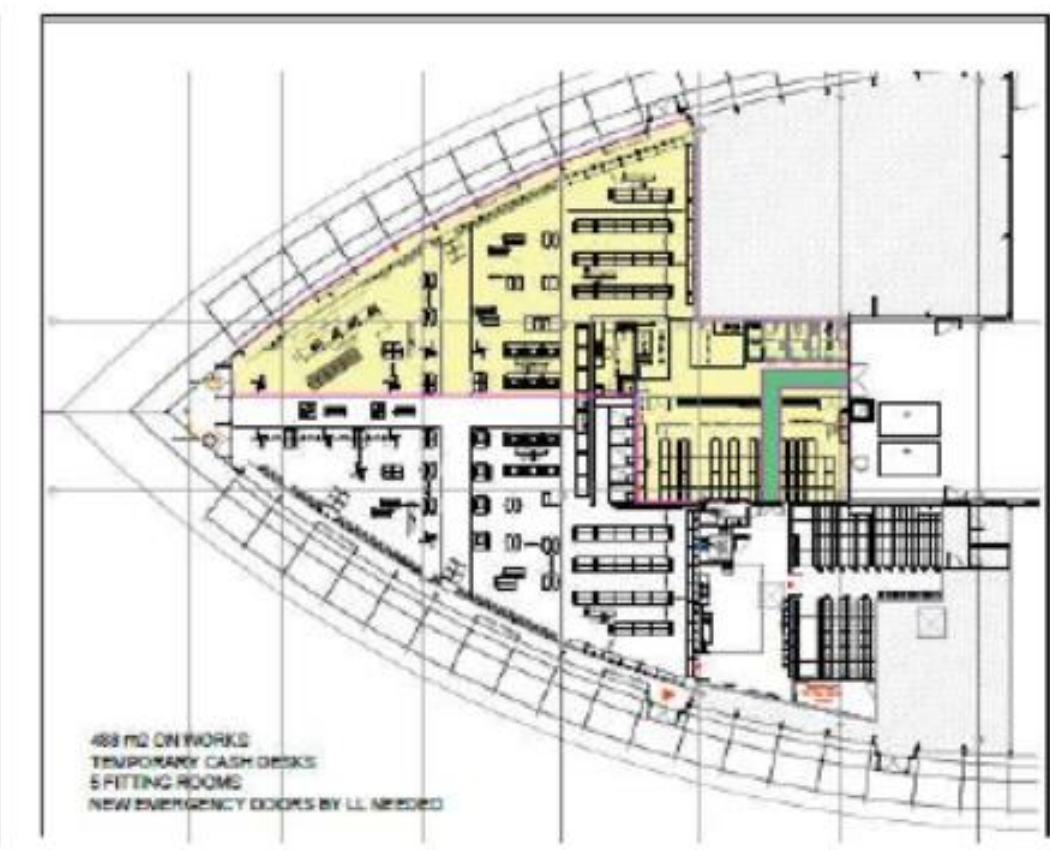
Version 1 03 04 17

PHASE 1



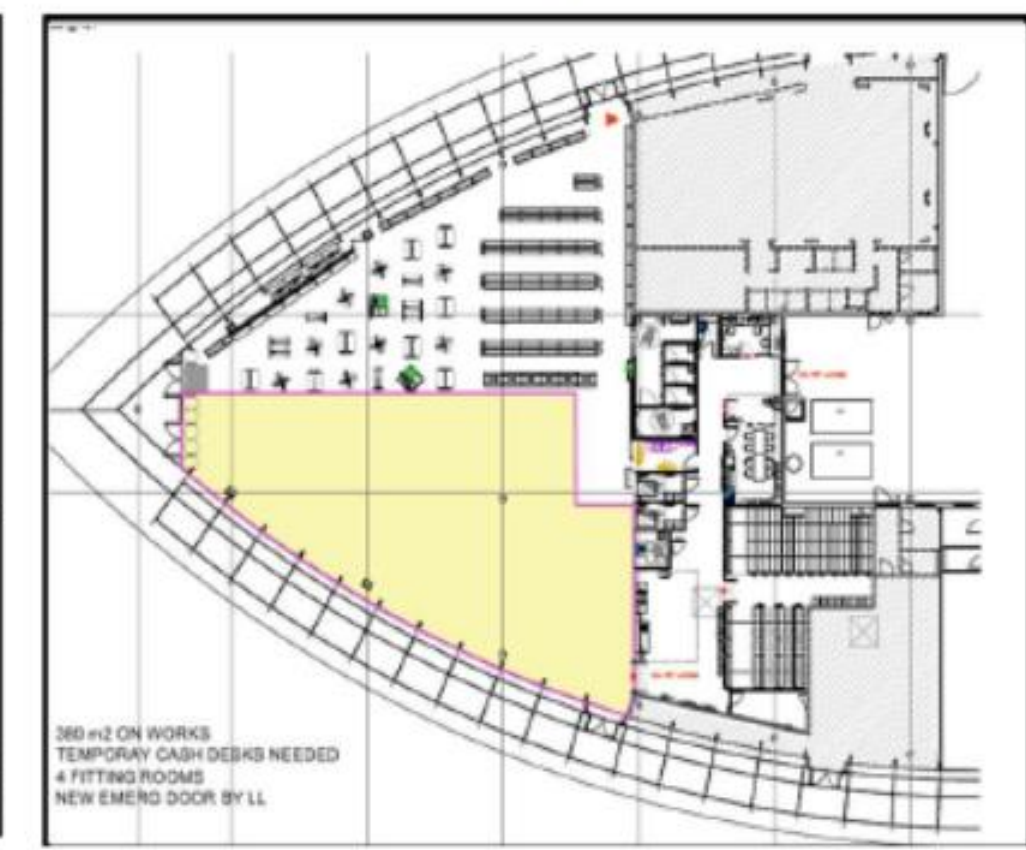
171 m² ON WORKS
 TEMPORARY ACCESS THROUGH DELIVERY
 AREA OR STOCK
 NOTE SALES BLOCKS ACCESS

PHASE 2



488 m² ON WORKS
 TEMPORARY CASH DESKS
 5 FITTING ROOMS
 NEW EMERGENCY DOORS BY LL NEEDED

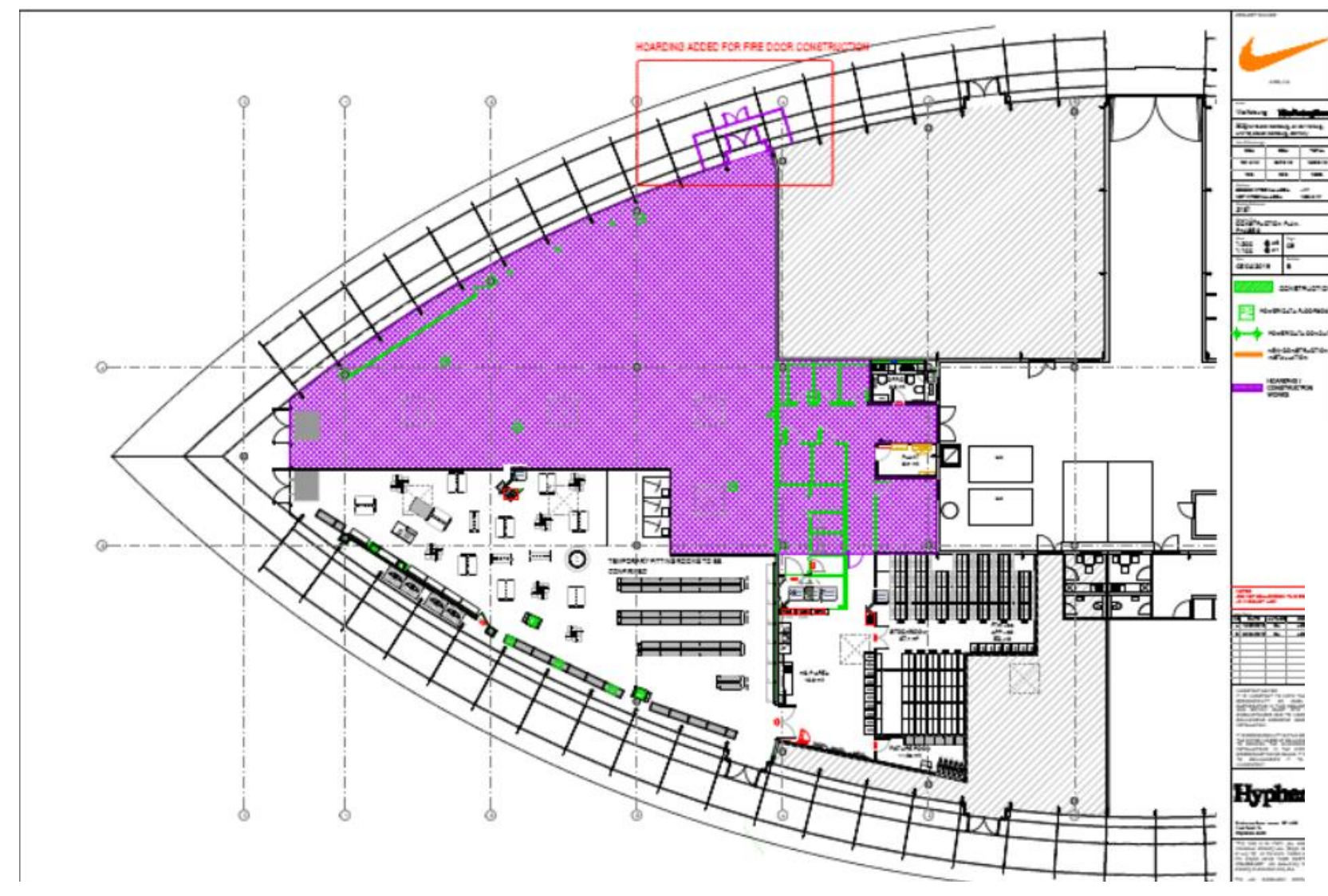
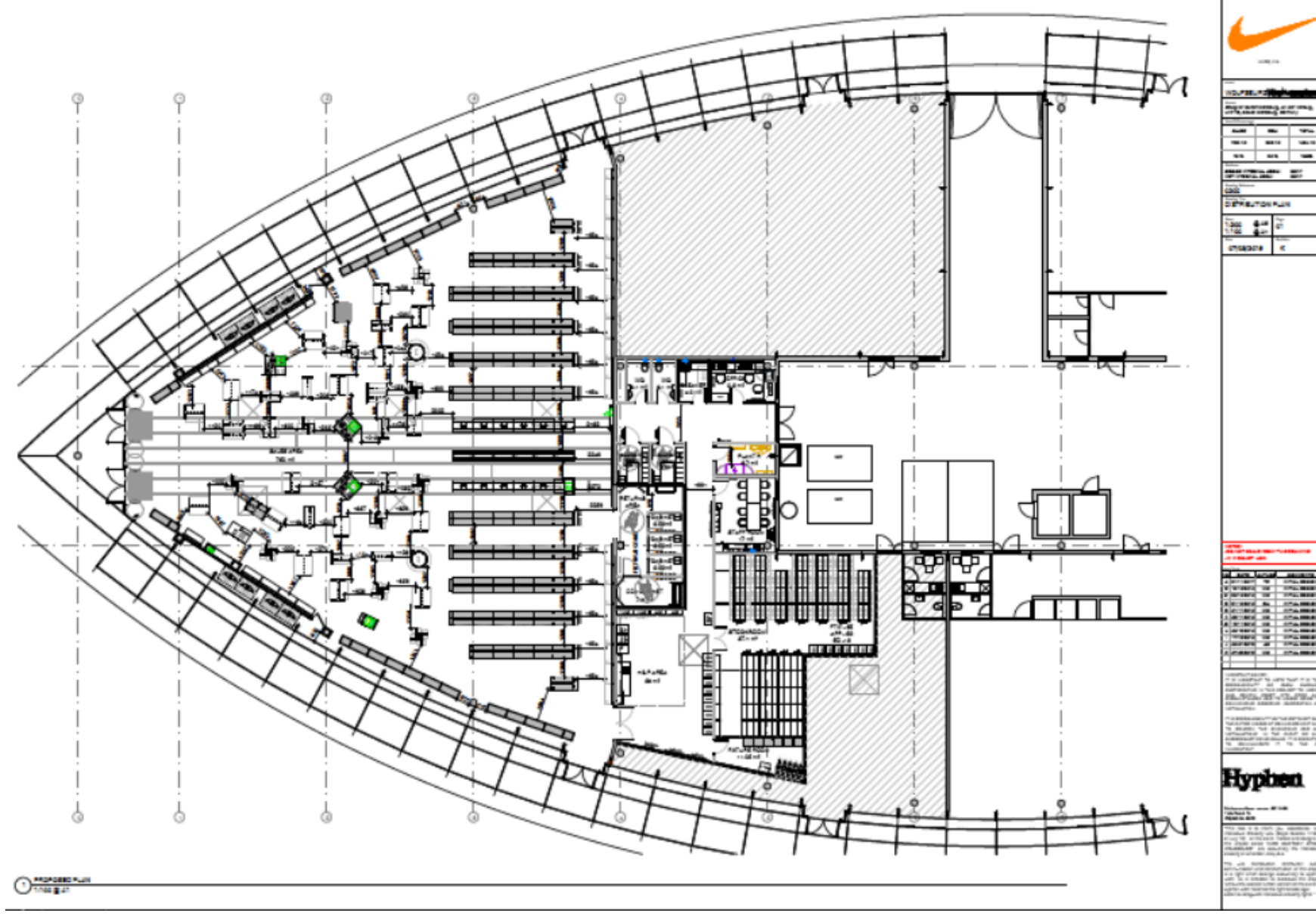
PHASE 3



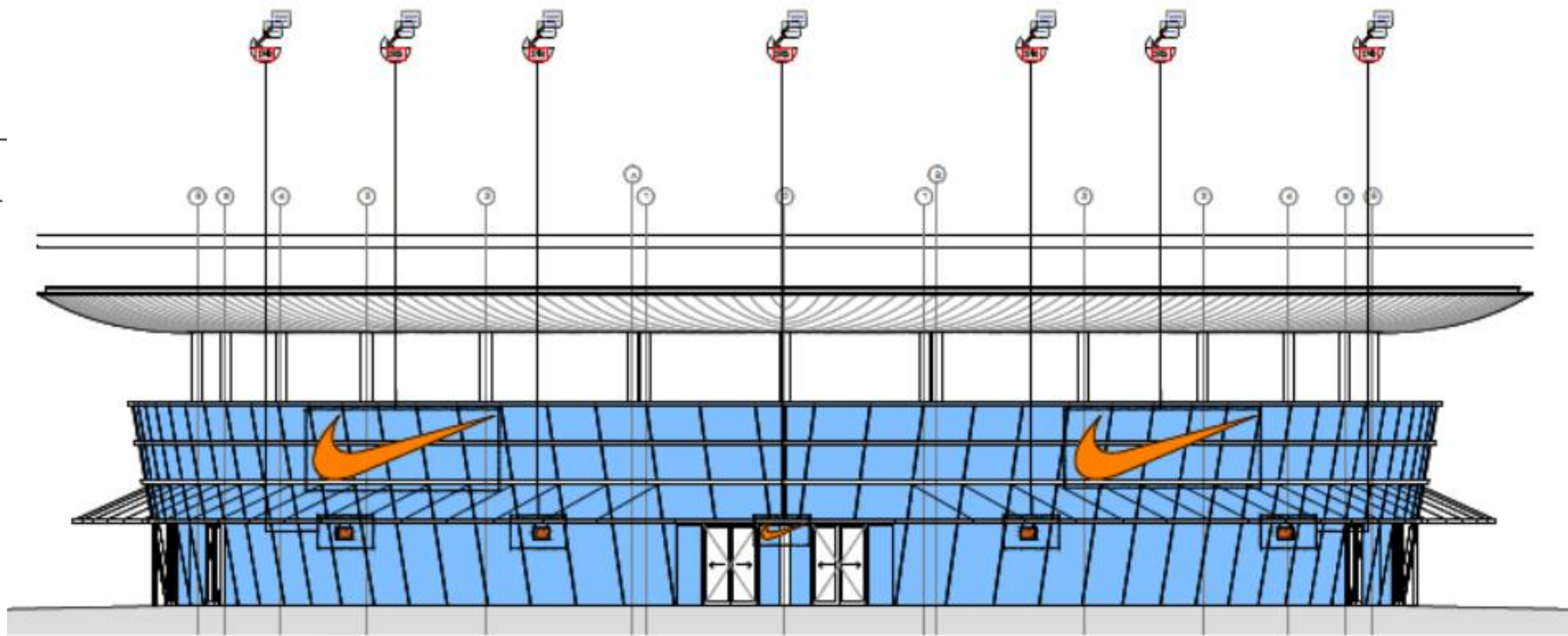
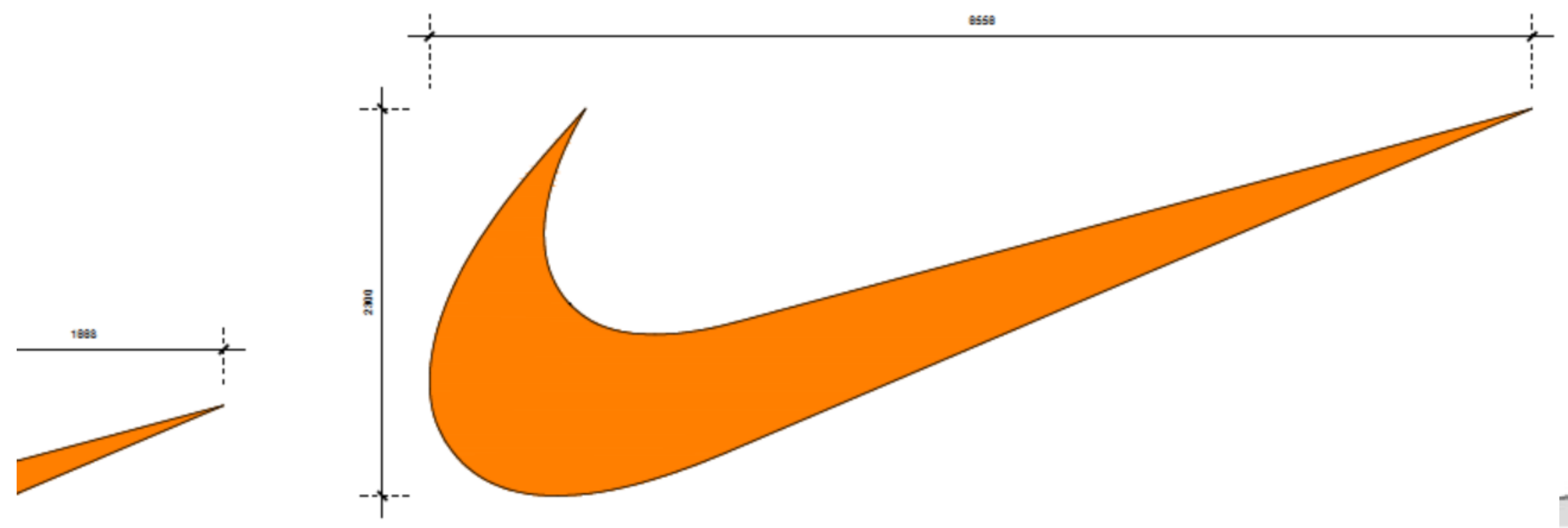
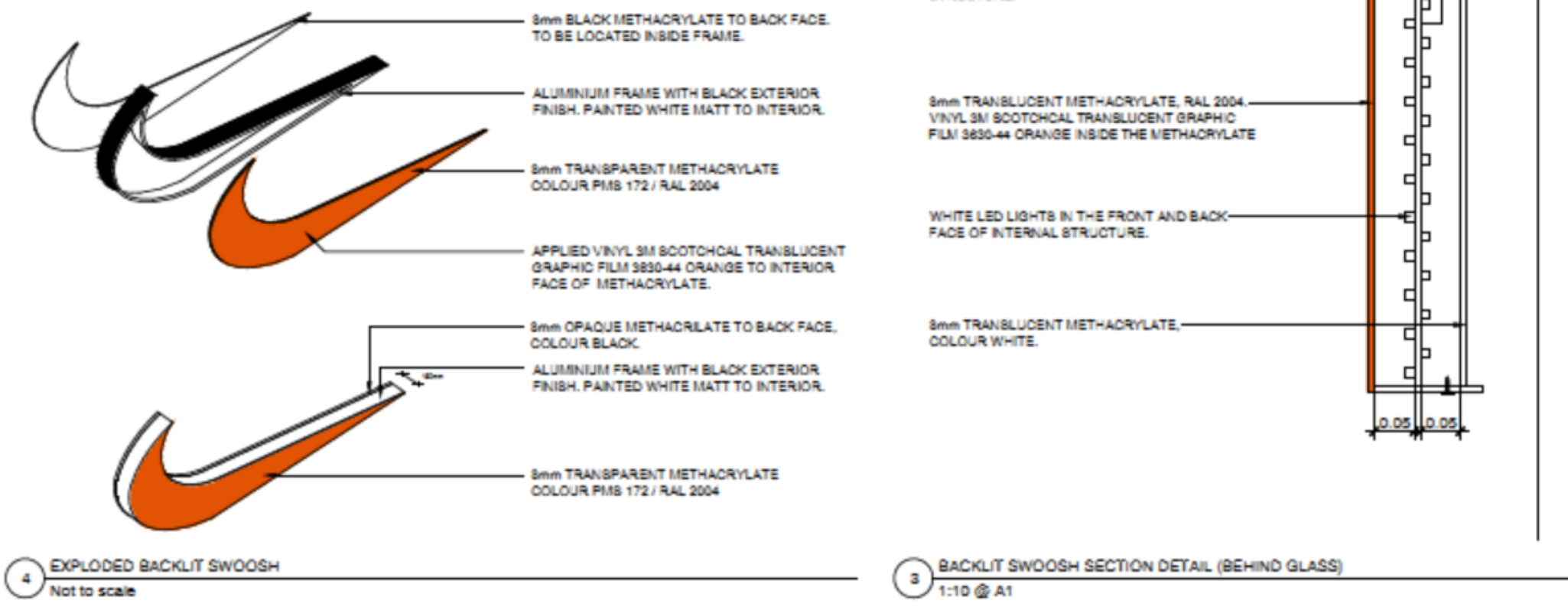
380 m² ON WORKS
 TEMPORARY CASH DESKS NEEDED
 4 FITTING ROOMS
 NEW EMERG DOOR BY LL

DEVELOPMENT

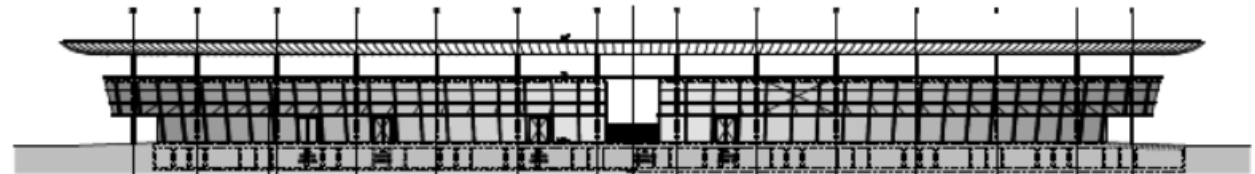
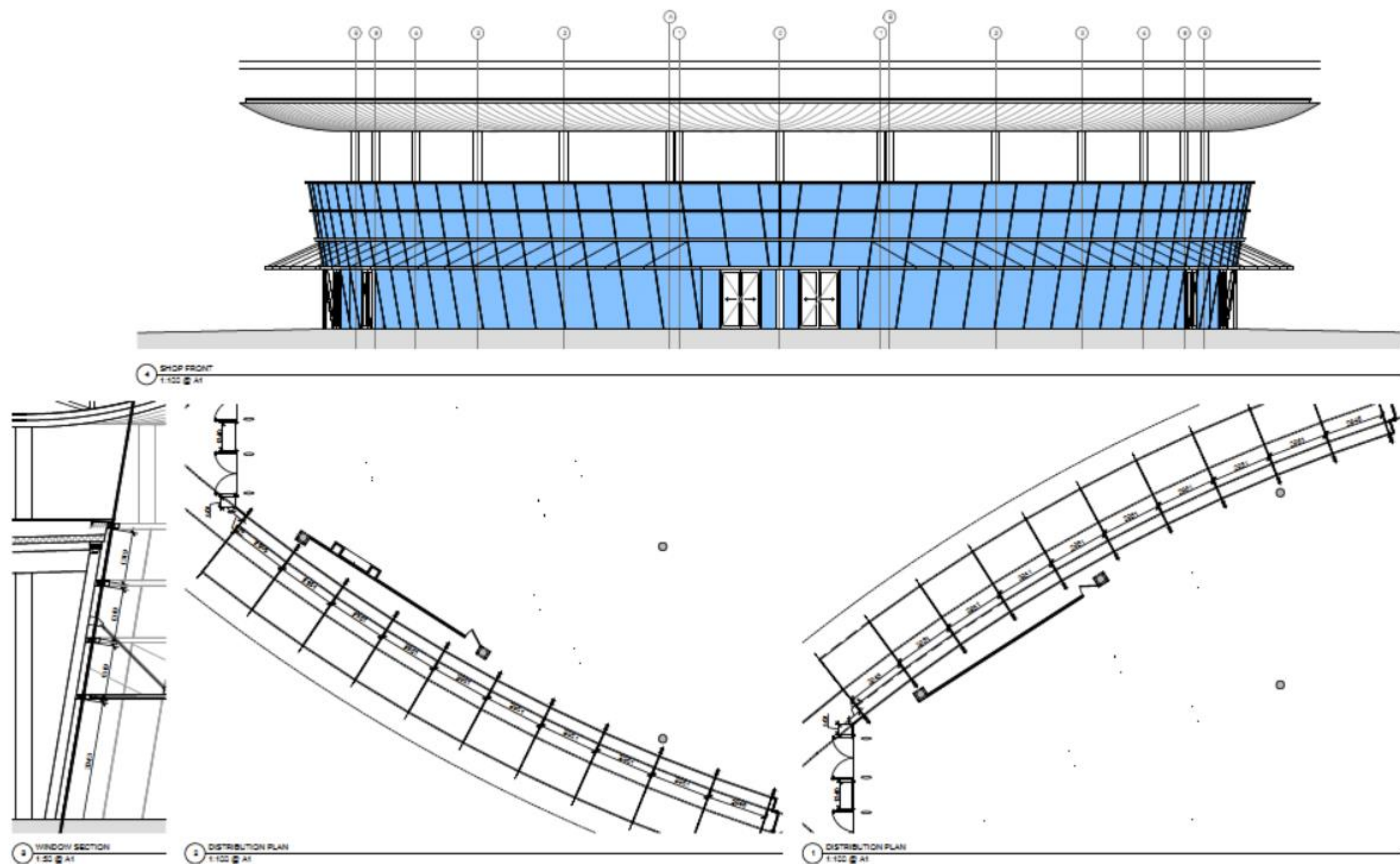
ZONING, PHASING, INITIAL DESIGN



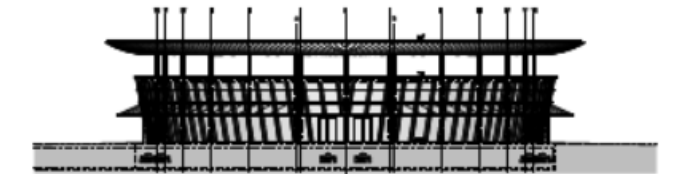
MOBILISATION PHASE



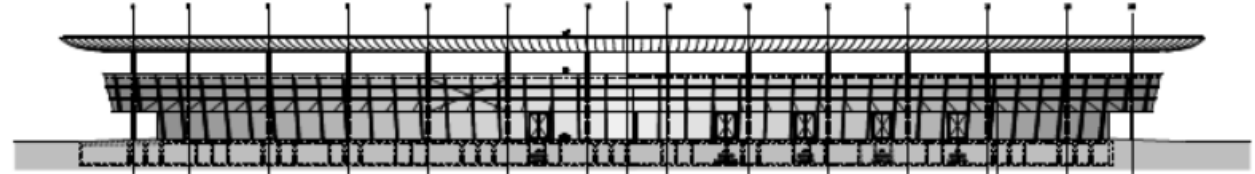
CHALLENGES -> SIGNAGE



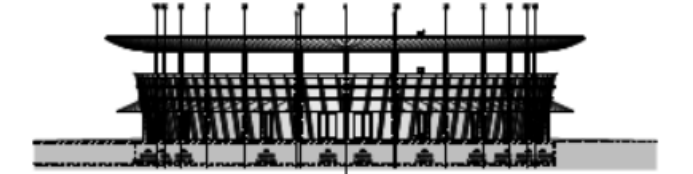
NSICHT VON NORDEN GEBÄUDE 3



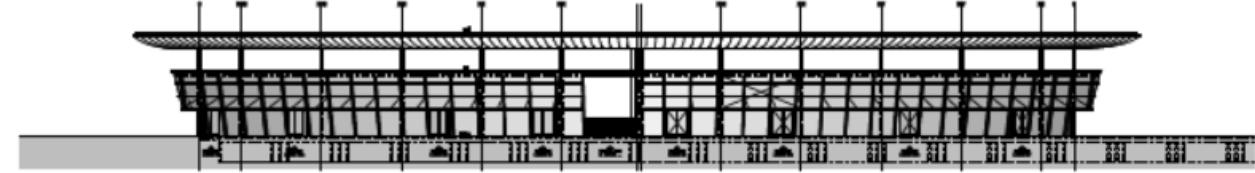
ANSICHT VON WESTEN GEBÄUDE 3



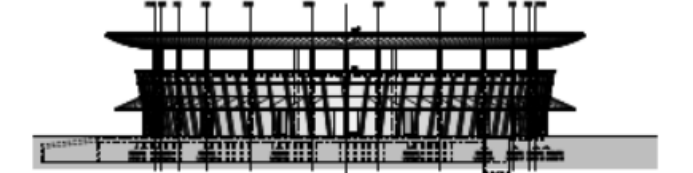
NSICHT VON SÜDEN GEBÄUDE 3



ANSICHT VON OSTEN GEBÄUDE 3



NSICHT VON NORDEN GEBÄUDE 4



ANSICHT VON WESTEN GEBÄUDE 4

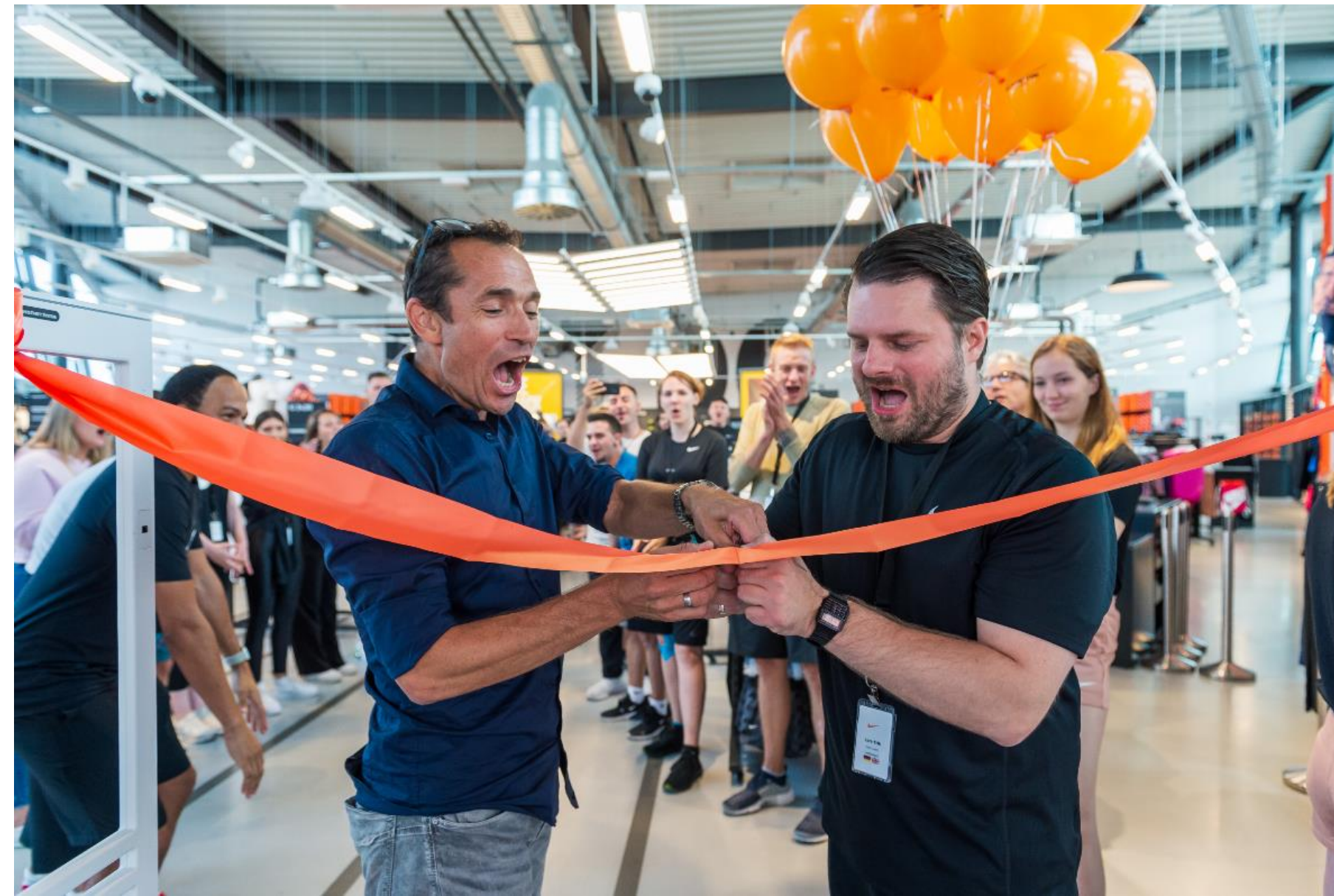
CHALLENGES -> SIGNAGE / FACADE



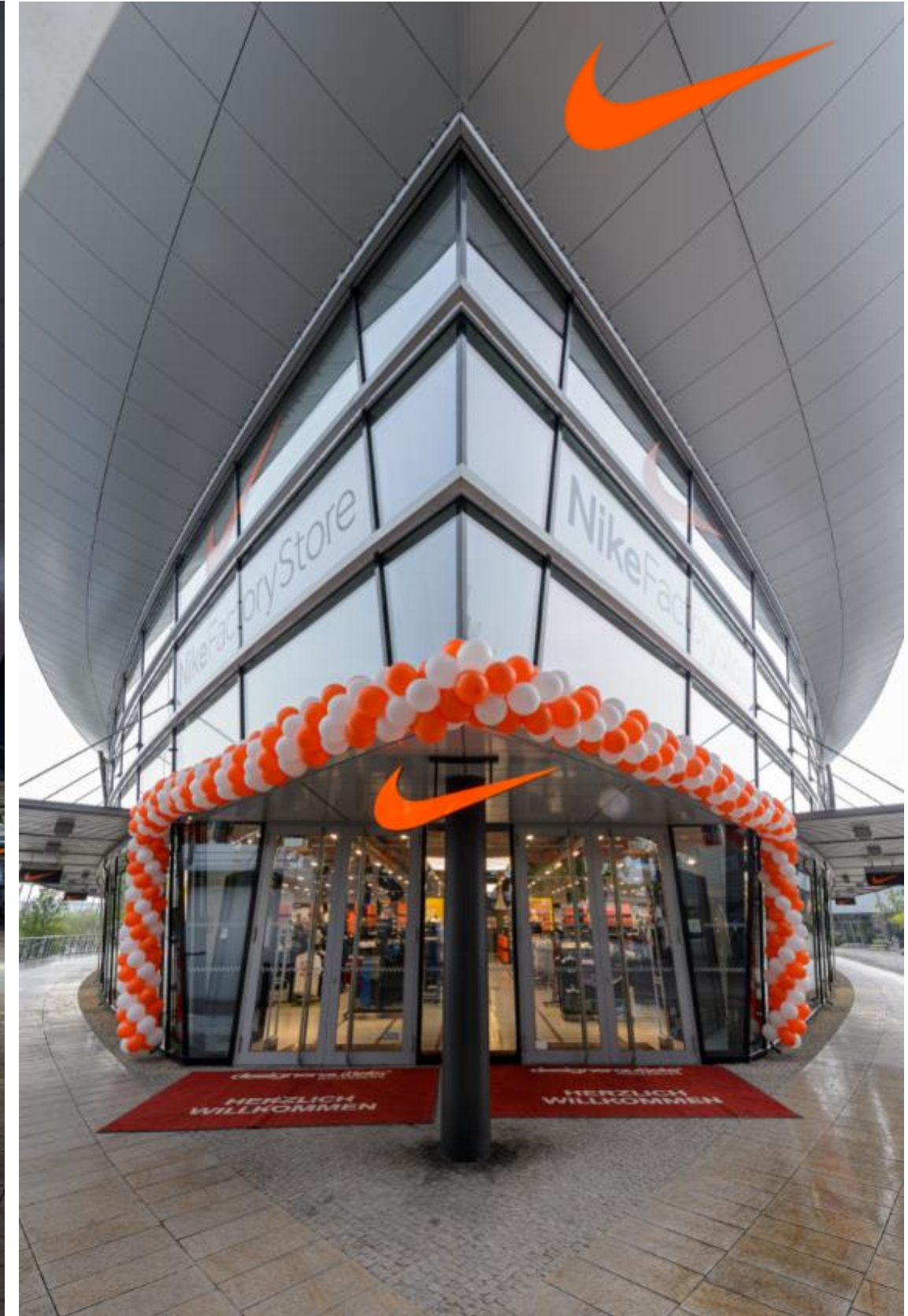
CHALLENGES -> NEW SIGNAGE

A photograph of a retail store aisle. The aisle is lined with tall, dark brown shelves filled with numerous orange shoe boxes. In the center of the aisle, a sign reads 'UMKLEID FITTING ROOMS' with a green exit sign above it. The floor is light-colored. A semi-transparent red banner is overlaid across the middle of the image, containing white text.

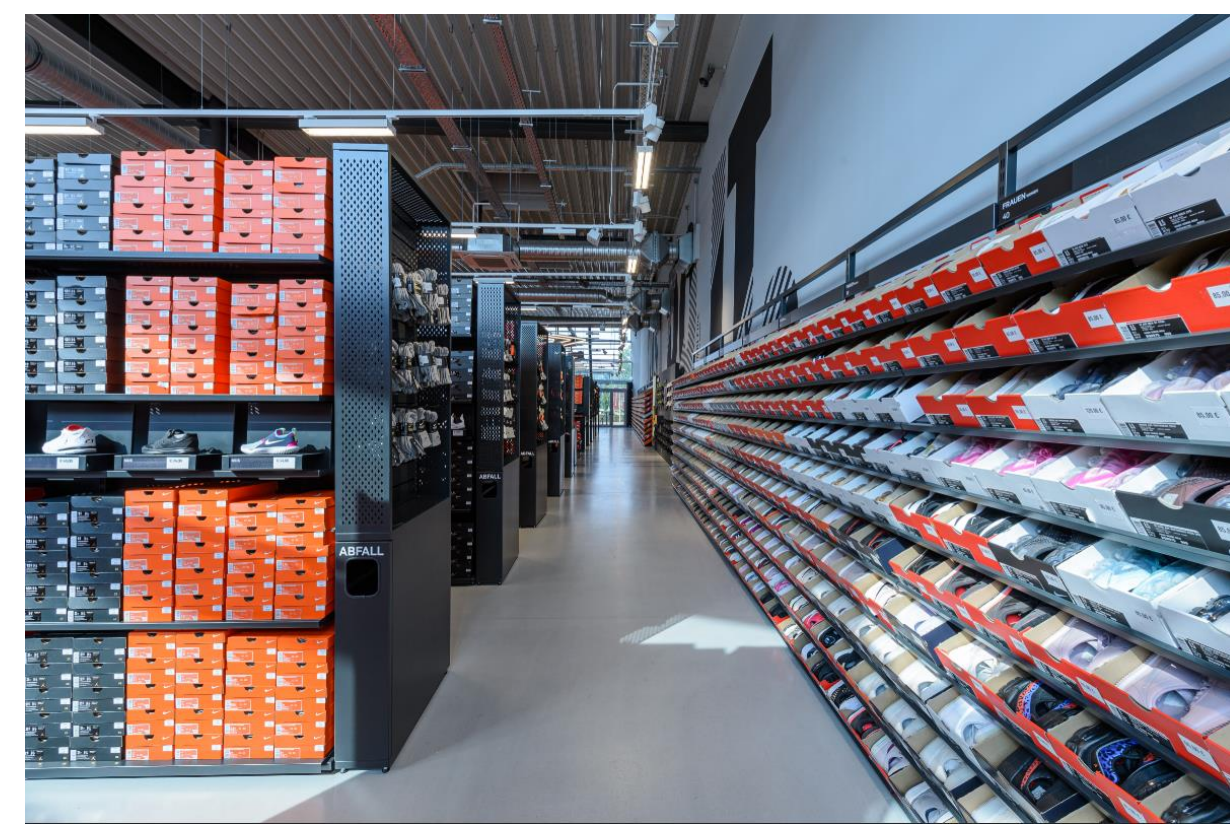
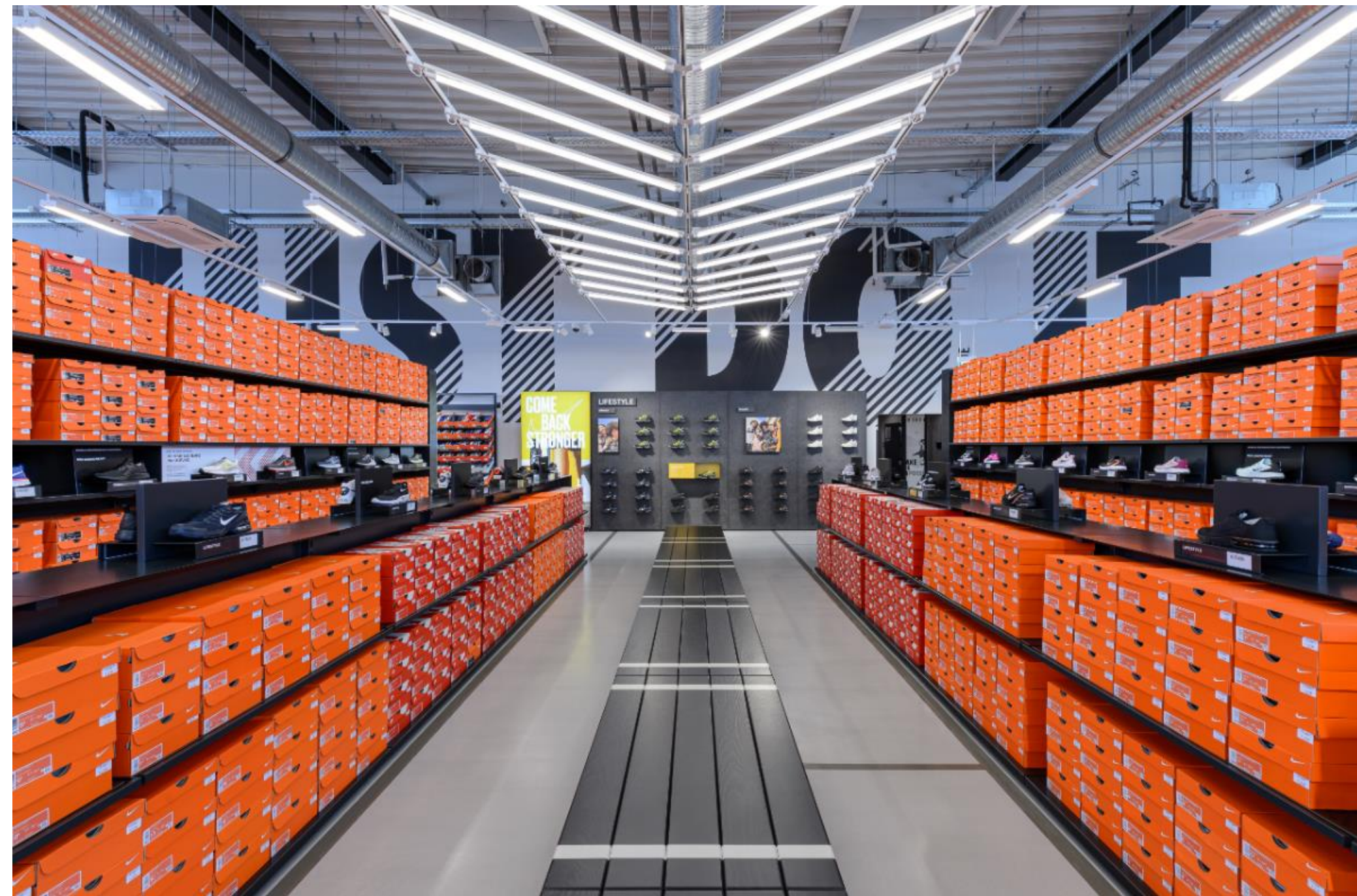
**PLAN YOUR WORK
WORK YOUR PLAN**



OPENING



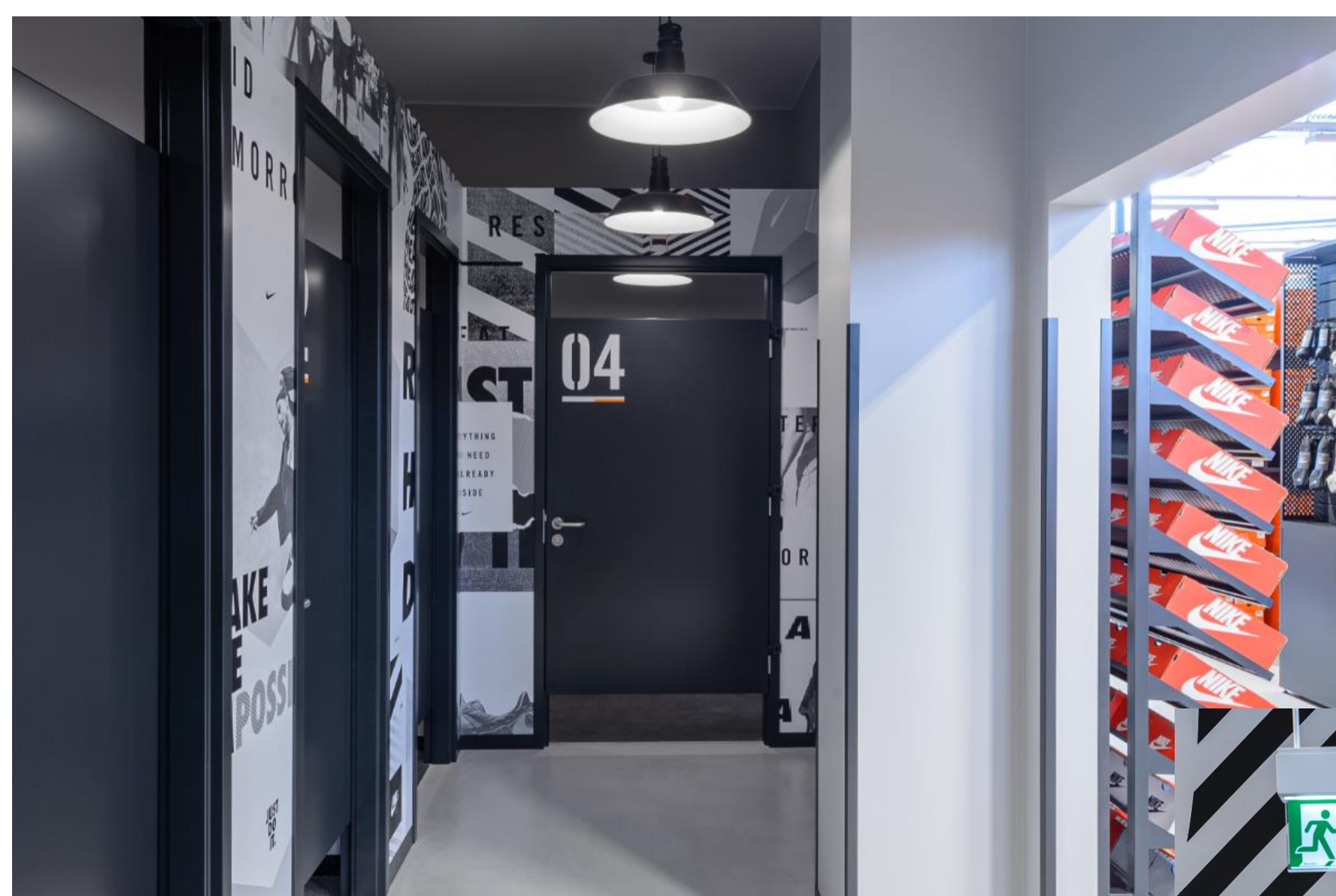
NEW WOLFSBURG STORE



NEW WOLFSBURG STORE - FOH



NEW WOLFSBURG STORE - FOH



NEW WOLFSBURG STORE – FITTING ROOMS



NEW WOLFSBURG STORE - BOH

WOLFSBURG

52° 25' 18.696" N
10° 47' 6.072" E

NIKE, INC. | ONE POWERUP DRIVE | BEAVERTON, OREGON | STORE # 0001, USA



THANK YOU