

# HORIZONTAL SIGNAGE



INDUSTRIAL AND WAREHOUSE  
HORIZONTAL SIGNAGE

**Prima**  
PAVIMENTI SPECIALI



INDUSTRIAL ENVIRONMENTS  
PRODUCTION DEPARTMENTS  
WAREHOUSES AND LOGISTICS  
DELIMITATION OF AREAS  
PARKING

## BENEFITS

HIGH RESISTANCE CONTINUOUS SURFACES  
HIGH RESISTANCE TO VEHICULAR TRAFFIC  
HIGH RESISTANCE TO CHEMICAL AGENTS  
HIGH ELASTICITY  
CERTIFIED SOLUTIONS  
EVEN ON VERTICAL SURFACES  
ECO-SUSTAINABLE SOLUTIONS

## DESIGN STAGE

The design and selection of a resin coating to implement signage in a plant or warehouse is essential for proper execution and usability. The presence of a layout designed ad hoc for specific needs facilitates implementation operations.

Our structured approach is based on over 40 years of experience in the flooring sector – certified sustainable solutions and the know-how of listening to our customers to always provide the right answer to every need.



ACQUIRED **KNOW-HOW** IS EXPRESSED  
IN THE **EFFECTIVENESS**  
OF THE PROPOSED **SOLUTIONS**

## SAFE AND LASTING CHOICES

### FLOOR EVALUATION

The overall floor structure and each of its components (foundations, subfloors, screeds, industrial floors, and finishes) are complementary and work together to provide the performance and durability required for the specific activity.

### FEATURES AND DETAILS

Evaluating all aspects, whether complex sites or a single client, type of business and requirements.

### VALUTAZIONE DEI COSTI

Preparation of surfaces before receiving a new resin coating. Suitable resin solutions and performance.

### REGULATORY COMPLIANCE

Before implementing signage, it is necessary to document and research the current regulatory framework. In terms of safety, the company's road plan must comply with Legislative Decree 81/2008. European Union Directive 92/58/EEC requires companies to have road markings in the warehouse.

### IMPROVED SAFETY AND ORGANISATION

Signage is one way to prevent hazards in the workplace. For example, it regulates traffic so that operators take a different route from forklift to avoid accidents.

### GUARANTEES

Trustee applicator and durability warranties. Certified and reliable solutions for surface protection.

### LIFESPAN

The life expectancy of a surface finish is determined by a combination of mechanical, chemical, thermal shock, and wear stress. These stresses are typical and different for each environment. Durable flooring refers to flooring that lasts for a long time without deterioration or loss of performance.

### QUICK INSTALLATION

The short lead time for resin signage allows for limited downtime. The signage can be made on top of an existing coating.

### SUSTAINABILITY

We use solutions that meet the highest standards of health and well-being. All floor coverings are low emission (VOC free) and meet the stringent parameters of the German AgBB standard.

### EXPERIENCE

For over 40 years, we have been in charge of the floors of the largest chemical-pharma industries in the country.

### MAINTENANCE

Resin systems ensure durability and avoid high maintenance costs. Scheduled and targeted cleaning is required to maintain performance.

### LEED

The resin system or polyurethane cement coating used includes a LEED® information statement detailing how it can contribute to the building's LEED credits.



**QUALITY IS VISIBLE  
AND 100% CERTIFIED**

**SIGNAGE**



# SOLUTIONS FOR HORIZONTAL SIGNAGE

PRODUCTION AREA  
DELIMITATION  
ATEX AREA DELIMITATION  
FOOTPATHS  
VEHICLE ROUTES  
WAREHOUSES AND LOGISTICS  
STORAGE AREAS

## SAFETY, AESTHETICS ORGANIZATION

Resin floor signage is an essential and indispensable part of any company's workplace safety plan. It is used to highlight the layout of the premises, indicating the flow of traffic and the destinations of the various areas, thus ensuring the safety of the people and vehicles present.

Horizontal strips, vehicle lanes, directional arrows, and pedestrian crosswalks, demarcation of work areas, help optimize workflow, highlight danger zones or evacuation routes, and control vehicular traffic.

Low-quality paints are sometimes used for signage on industrial floors. This choice will result in a short life-span and additional cost and disruption, as it is often necessary to repaint areas that have deteriorated or are no longer visible by the repeated passage of goods handling equipment.

It is therefore best to outsource the realization of signage to structured companies that use epoxy and polyurethane resin systems specifically designed for this purpose, which are guaranteed to last a very long time compared to other materials.

The layout of the signage is customizable, as is the aesthetic appearance, including the creation of corporate logos.

A COMBINATION OF  
SAFETY AND DESIGN



Project: Ferrari - Maranello (MO)

## EPOXY SYSTEMS

Multi-layer epoxy coatings provide surfaces with sufficient thickness to mitigate the imperfections of the original floor and offer excellent resistance to mechanical and chemical loads. Several layers of resin are applied. Quartz sanding of each layer to ensure perfect adhesion between layers, maintaining anti-slip characteristics and improving mechanical strength. They can also be self-levelling.

## POLYURETHANE SYSTEMS

Elastomeric polyurethane systems (also self-levelling) are widely used in environments where greater resistance is required. Several layers are applied, based on two-component epoxy resin (possibly quartz sanding) or polyurethane resin. These are particularly resistant systems that bridge and even out cracks in the original surface and are particularly resistant to impacts, abrasion, and chemicals.

## FAST LINE SYSTEM

Colored coating, UV polymerized, Fast Line System is based on innovative new generation products whose polymerization reaction is induced by the passage of a photo-polymerizing machine equipped with UV lamp. Greater adhesion, hardness and scratch resistance. Excellent resistance to acidic base chemicals. Long-lasting brilliance.

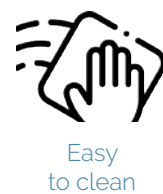
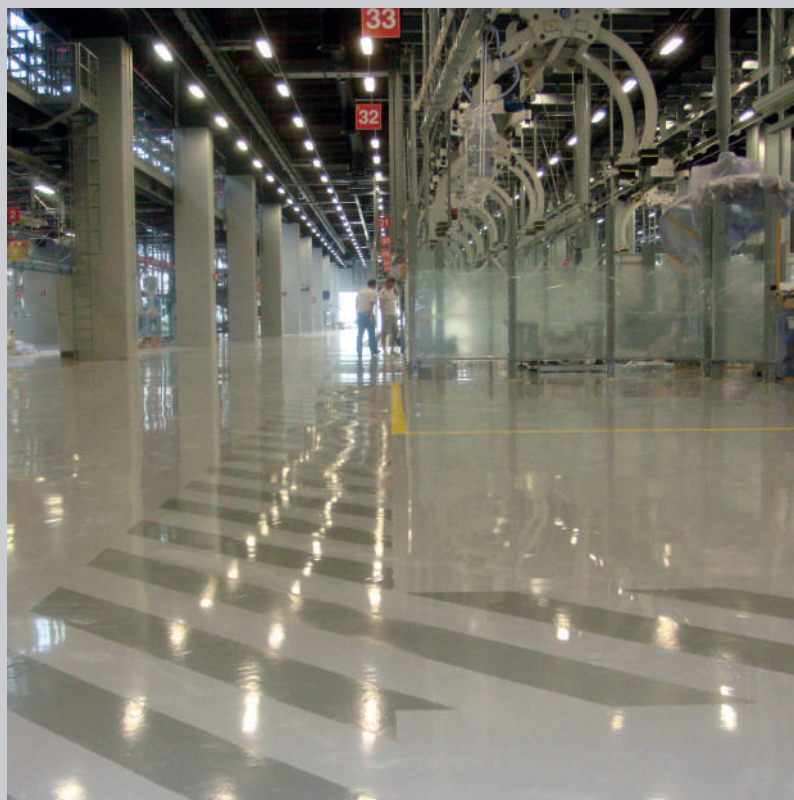
SIGNAGE

**Prima**  
PAVIMENTI SPECIALI





Project: LIDL - Firenze



# CERTIFIED SYSTEMS

Certified, durable solutions to meet the needs of all industries, warehouses and car parks.

The use of epoxy and polyurethane resins, applied by hand using a multi-layer technique, makes it possible to create horizontal floor signage that last much longer than cheaper traditional paints.

## How is the signage made?

- If the substrate is concrete, priming may be necessary;  
one or two coats of resin of the chosen color;  
possible transparent protective top coat.

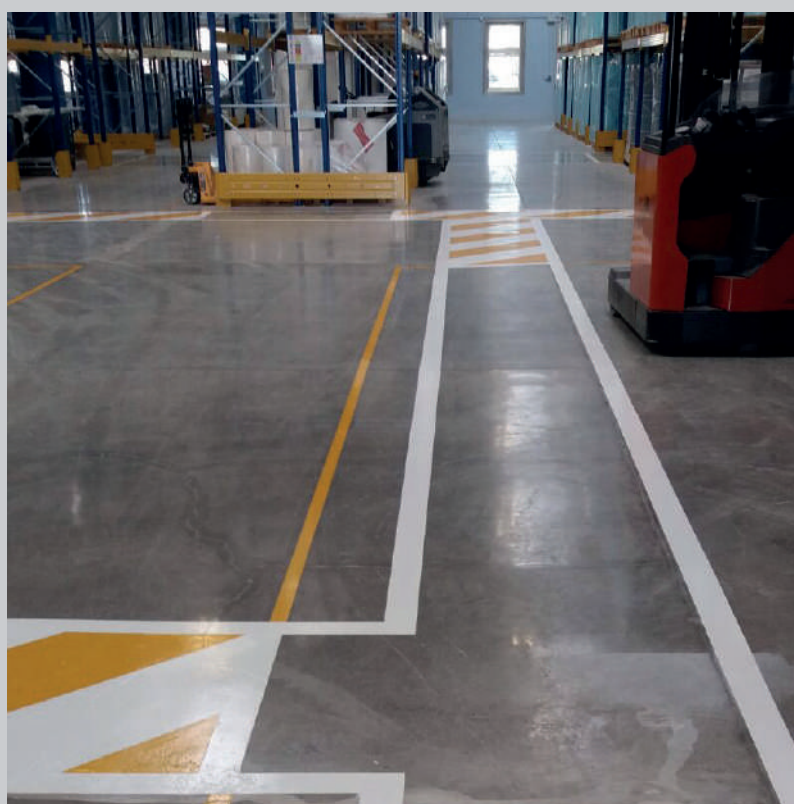
## FEATURES

Anti-slip effect.  
VOC-free: safe for the environment as it does not contain solvents.  
Durable: high resistance to wear and abrasion caused by continuous passage of vehicles.  
Waterproof and dustproof.  
Resistant to most chemicals.  
Easy to maintain.  
Reduces intervention time and, consequently, downtime.  
Excellent cost-performance ratio.  
Costs chargeable to continuous restoration are eliminated.

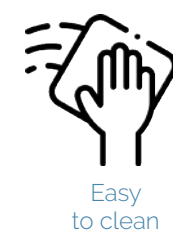
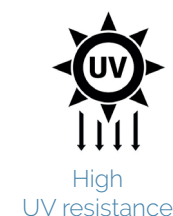
# MULTI-LAYER EPOXY SYSTEM POLYURETHANE SYSTEM

SIGNAGE

**Prima**  
PAVIMENTI SPECIALI



Projects: Ikea warehoused (IT)



# PRIMA FAST LINE SYSTEM®

## THE FINAL SOLUTION IN JUST 12 HOURS.

Prima Fast Line System® is a top-quality colored coating, UV polymerized, made with special technology for the realization of horizontal signage in both indoor and outdoor environments.

### How does it work?

Fast Line System is based on innovative new generation products whose polymerization reaction is induced by the passage of a photo-polymerizing machine equipped with UV lamp. As soon as the applied products come into contact with the UV light of the machine, the coating immediately becomes a dry, hard and uniform film, strongly adherent to the substrate.

### FEATURES

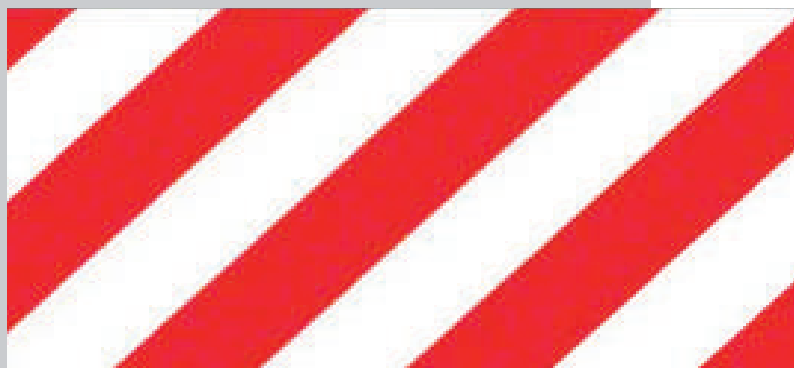
- Greater adhesion, hardness and scratch resistance
- Immediate treatment and reduction of plant shutdown costs.
- No smell.
- No problem with application temperatures:  
-26 ° C to + 45 ° C
- Excellent resistance to acidic base chemicals, inks, colored pigments, solvents and tire impressions.
- Extended exercise life.
- Long-lasting gloss.
- High resistance to UV rays.
- Maintenance and low cleaning costs.

## UV RESISTANT HORIZONTAL SIGNAGE

SIGNAGE

**Prima**  
PAVIMENTI SPECIALI





# EUROPEAN LEGISLATION

In the European Union, Directive 92/58/EEC is in force. This is a standard that is binding in all EU countries and therefore falls under national law.

This standard requires the employer to provide floor signage where there are hazards that cannot be avoided by other technical means of protection. Areas where hazards exist from impact with obstacles and from falling objects and persons should be identified.

For example, it is mandatory to mark the underpasses that cross the pallet racking to facilitate handling and serve as an emergency exit. Yellow and black or white and red stripes are used for this purpose.

The directive requires employees and their supervisors to be trained in the prevention measures and signage used.

The directive describes the colors of safety signage that can be used for both signage and lines to be drawn on the floor:

Color	Meaning	Directions and details
Red	Prohibition signs Danger, alarm Fire-fighting materials and equipment	Dangerous behaviors. Alt. arrest, eviction. Identification and location.
Yellow Orange	Warning signs	Caution, verification.
Light Blue	Prescription signs	Specific behaviour or action obligation to wear personal protective equipment.
Green	Rescue signals	Doors, exits, routes, materials, lifeguard or rescue stations, premises. Security situation. Back to normal.

## OBSTACLES AND DANGERS

## COLORS



# GUIDELINES

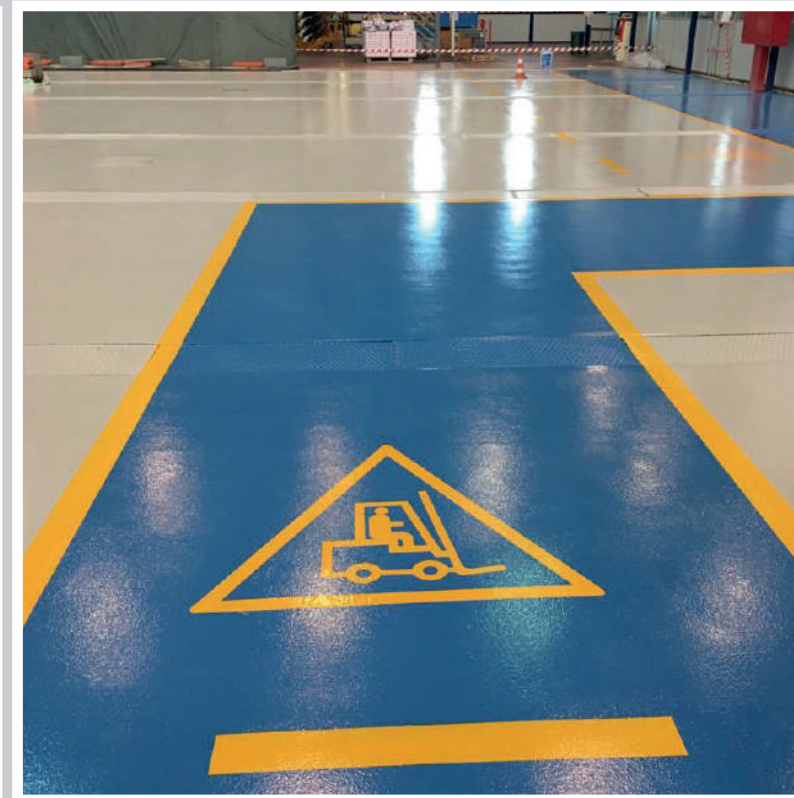
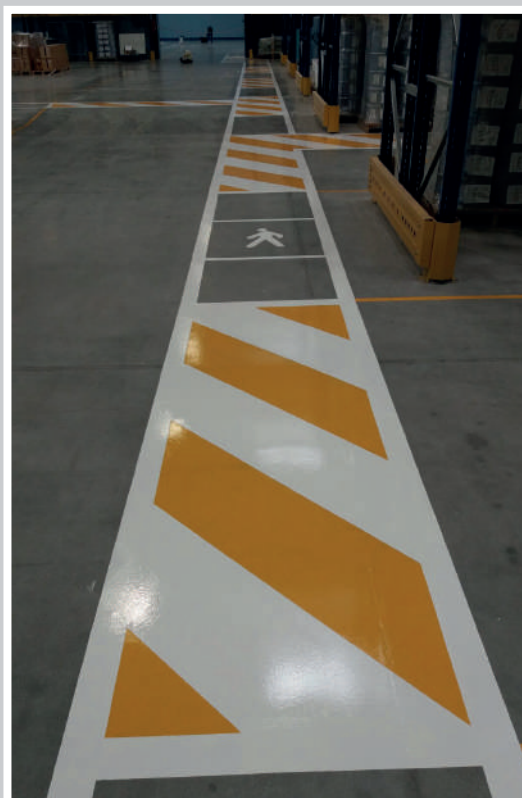
## SIGNAGE DESIGN SUGGESTIONS

Some areas can be highlighted in different colors to identify them as off limits within a production department or warehouse because they are adjacent to emergency exits, fire extinguisher areas, etc.

The recommended size and layout of signage to ensure appropriate movement of vehicles within the site and safe movement of operators should include a number of elements to facilitate reading and optimise workflow, such as

- Simple continuous strips.
- Pedestrian crosswalk strips.
- Alternating color strips to demarcate specific areas.
- Representative pictograms (man, forklift).
- Numbers and words.
- Directional arrows.
- Emergency exits and hazard signs.
- Entrances and exits.
- Pedestrian transit lanes.
- Transit lanes for vehicles.





SIGNAGE

**Prima**  
PAVIMENTI SPECIALI



# CASE HISTORY

Our industrial know-how and expertise in this field, our partnerships as well as recognized qualities over the years, have allowed us to become a major player in this sector.

The best calling card is the flooring we have realised. In Italy, in Europe and, in the rest of the world.

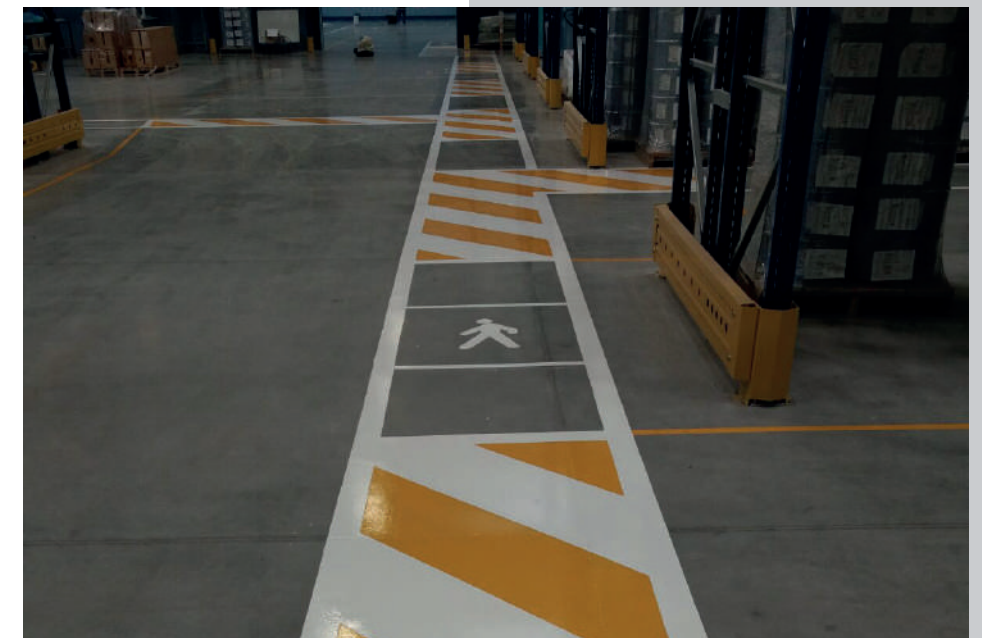


SOME OF OUR  
CUSTOMERS

Piaggio plants  
(IT)



Ikea warehouses  
(IT)



Leonardo  
Venegono (VA)





# CONTACTS

## Milano - Operational HQ

Via Piemonte, 23/B  
20098 San Giuliano Milanese (MI)  
T +39 02.98282914

## Torino - Head Office

Via Vittorio Amedeo II, 19  
10121 Torino  
T +39 011.0714790

[info@primapavimenti.it](mailto:info@primapavimenti.it)  
[www.primapavimenti.it](http://www.primapavimenti.it)

## Switzerland

Pavimenti Speciali Srl - Talenture S.A.  
Riva Albertolli 1  
6900 Lugano - Switzerland

### CERTIFICATIONS



OS 6 Classe IV  
OS 26 Classe IV  
OG 1 Classe III  
OG 3 Classe II

### INSURANCE COMPANY



### ASSOCIATIONS



# PARTNERS

### TRUSTEE APPLICATORS



SHERWIN  
WILLIAMS

HIGH  
PERFORMANCE  
FLOORING

### PARTNER

